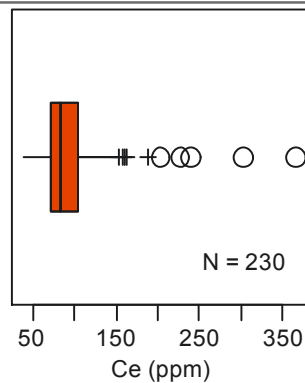
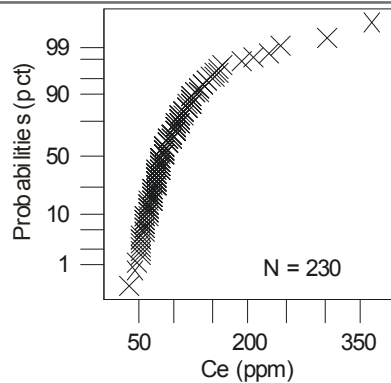
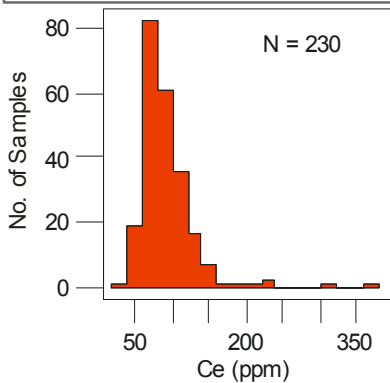
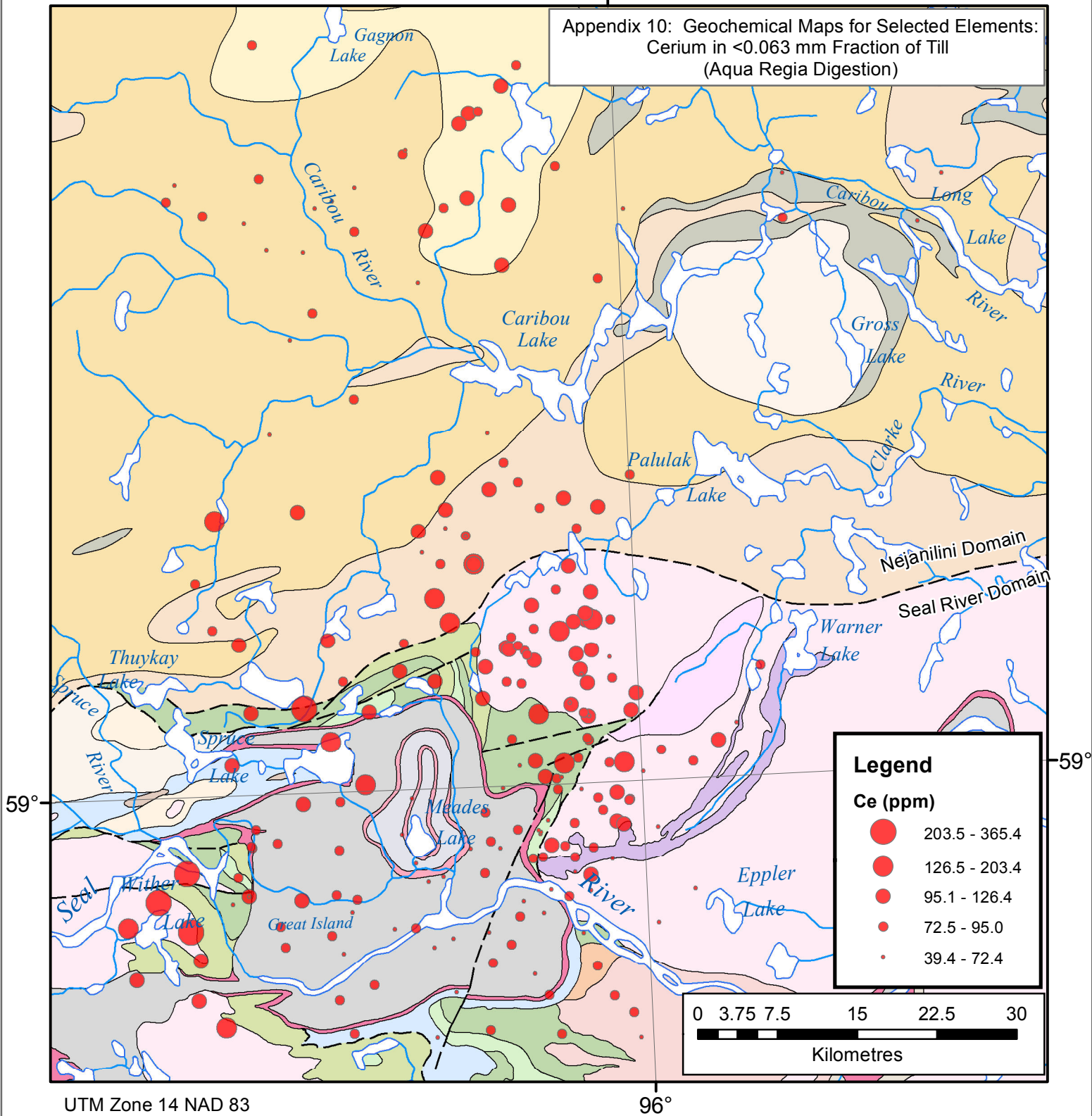


96°

Appendix 10: Geochemical Maps for Selected Elements:
Cerium in <0.063 mm Fraction of Till
(Aqua Regia Digestion)



Summary Statistics

| | |
|------------------------|-------|
| Maximum | 365.4 |
| 98th Percentile | 194.6 |
| 95th Percentile | 144.8 |
| 90th Percentile | 123.7 |
| 3rd Quartile | 103.4 |
| Median | 83 |
| 1st Quartile | 71.62 |
| 10th Percentile | 62.47 |
| 5th Percentile | 56.73 |
| 2nd Percentile | 48.03 |
| Minimum | 39.4 |
| Median Abs. Deviation | 22.2 |
| IQR Est. of Std. De. | 23.6 |
| Mean | 92 |
| Standard Deviation | 36.8 |
| Coeff. of Variation, % | 40 |